

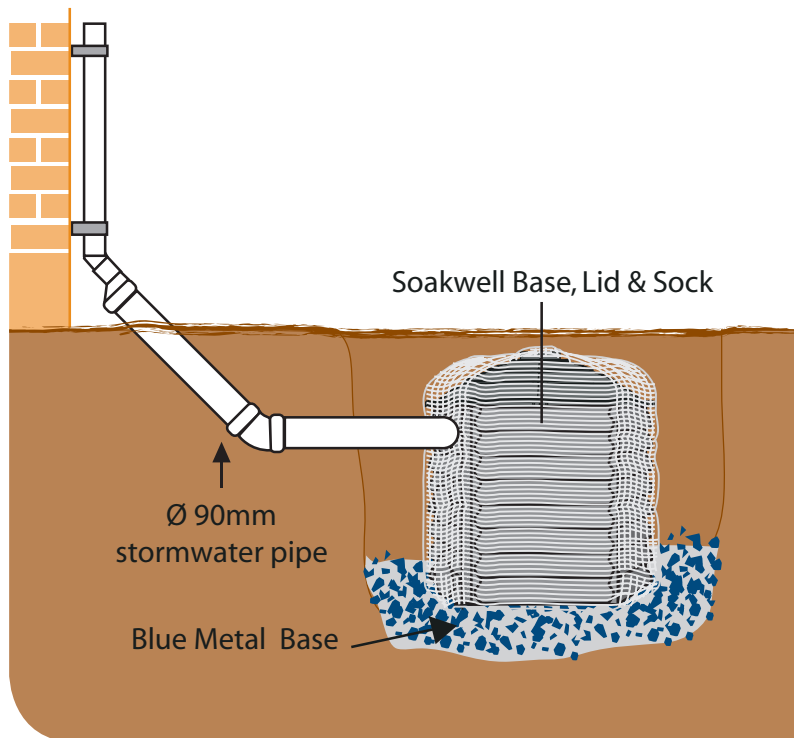
# Soakwell

*Rapid Flow*



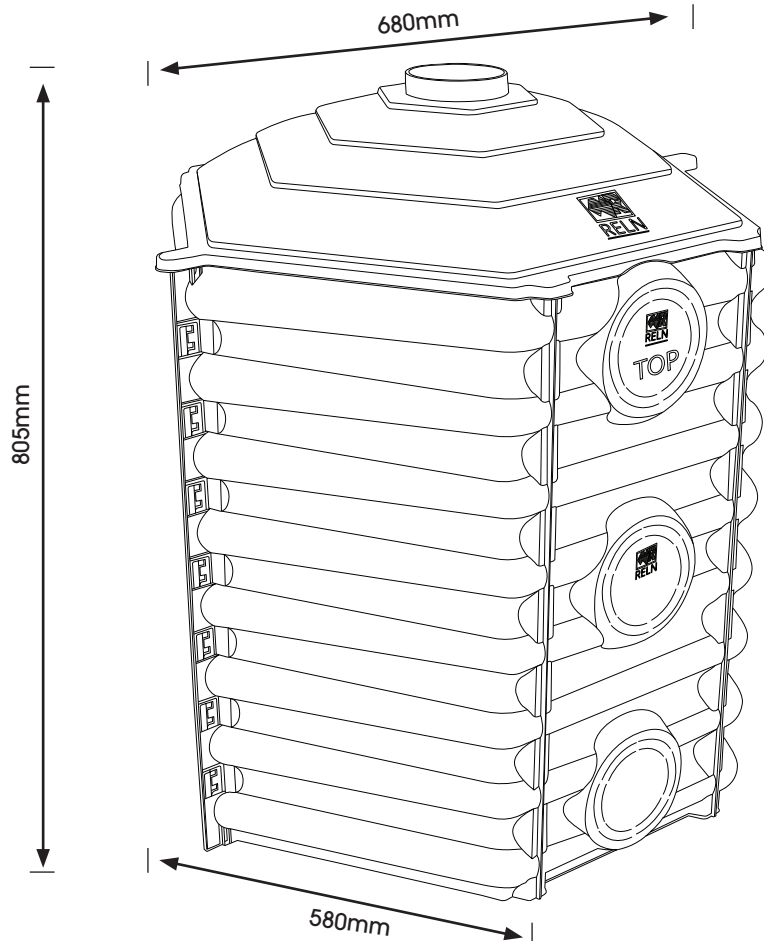
## RELN Soakwell

- Light-weight and easy to install
- Strong beehive design, manufactured in high strength reinforced polymer
- Easy to assemble
- Designed to withstand ground pressure
- Drainage slots provide maximum water flow to surrounding soil



## Soakwell

RELN Soakwell quickly clears water in sandy soil. Ideal for distributing surfacewater from down pipes into the ground and surrounding soil, Soakwell consists of a base, lid and sock with knockout centre or bottom inlet/outlet for controlled flow.



- Lightweight, easier to install
- Strong beehive design, manufactured in high strength reinforced polymer
- Easy to assemble
- Designed to withstand ground pressure
- Drainage slots designed to provide maximum water flow to surrounding soil

**Range:** Soakwell Base, Lid, Sock, Enviro Pack

**Display:** Hang Pads available

### >Frequently Asked Questions

#### Q1. Where can a Soakwell be used?

A. Soakwells are great for areas housed on sandy soils. Soakwells disperse water into the surrounding soil from the downpipe of your house/building.

#### Q2. Why is it a beehive shape?

A. The beehive shape allows the Soakwell to withstand ground pressure.

#### Q3. Can more than 1 Soakwell be aligned?

A. Yes. The Soakwell has multiple outlets that can be knocked out for the attachment of another Soakwell.

#### Q4. Why do I need a Soakwell Sock?

A. The Soakwell Sock stops sand entering the Soakwell. It also eliminates the need to backfill with blue metal aggregate.



## Soakwell - Base



Product Code: 000865

Weight: 3kg



## Soakwell - Lid



Product Code: 000866

Weight: 1.4kg



## Soakwell - Sock



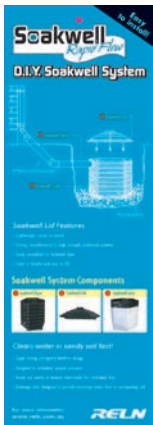
Product Code: 001245

Weight: 0.1kg


**Soakwell - Enviro Pack  
 complete with 1x Soakwell  
 Base, 1x Soakwell Lid,  
 1x Soakwell Sock, 1x 6m  
 Stretch Drain 100mm Solid**


Product Code: 000017

Weight: 6.7kg


**POS Material for RELN  
 Soakwell - Rapid Flow Pad**


Product Code: 000864



High strength, reinforced  
 polymer beehive design

Step ribbed lid for  
 extra strength



Drainage slots for  
 maximum water flow

Sock to keep  
 sandy soil from  
 entering Soakwell



Easy, clip together  
 assembly

# Soakwell *Rapid Flow*

## D.I.Y. Soakwell System Planner

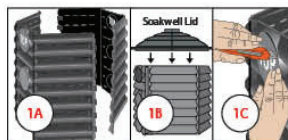
## Design your own drainage system with Soakwell

This is a full-page image of a blank sheet of graph paper. The grid consists of small squares formed by thin, light blue lines. There are no margins, text, or other markings on the page.

COMPONENT		QTY	CHECK
1 Soakwell Base			<input type="checkbox"/>
2 Soakwell Lid			<input type="checkbox"/>
3 Soakwell Sock			<input type="checkbox"/>

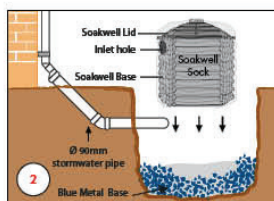
## Installation Instructions for Soakwell System

### Easy Installation in 3 simple steps



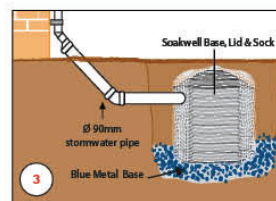
### 1. ASSEMBLE BASE AND "NEW" SOAKWELL LID

Assemble sides of the Soakwell Base by inserting tabs and pushing lock clips together – both sides “TOP” up.  
Cut out “TOP” inlet hole.  
Fit “NEW” Soakwell Lid to the Base.



## 2. FIT SOAKWELL SOCK

Fit Soakwell Sock over the top of assembled Base and Lid.  
Cut inlet hole in Sock to fit pipe through.



### 3. INSTALL

Place assembled Soakwell in a one metre hole with a base of 100mm blue metal.  
Connect to storm water pipe.  
Backfill hole and cover.